

Index of GIS maps for Pharmaceutical Needs Assessment – July 2014.

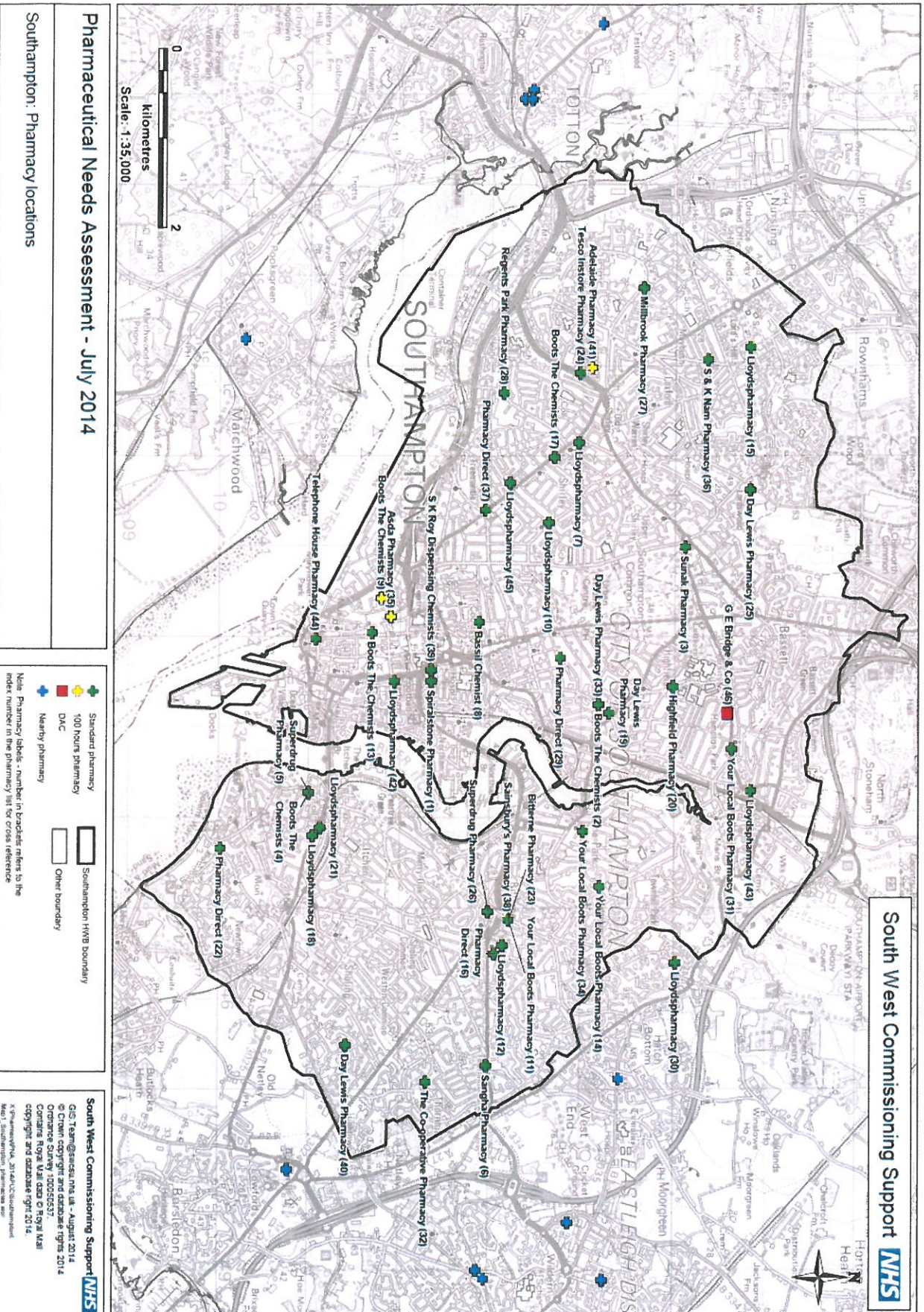
Southampton

| Filename | Version | Latest date | File type | Comments/description |
|---------------------------------------|---------|-------------|-----------|--|
| Map1_Southampton_PNA2014_Pharmacies | 1 | 08/08/14 | PDF | Pharmacy locations with labels. Different symbols are used for each of the pharmacy categories – community, 100 hour and non-standard (DAC). Pharmacies surrounding Southampton are also shown. Southampton pharmacies are labelled by trading name and index number. |
| Map2_Southampton_PNA2014_1.6kmBuffers | 1 | 08/08/14 | PDF | 1.6km buffers around Community and 100 hour pharmacies. 99% of Southampton's population is within 1.6km of a community or 100 hour pharmacy. |
| Map3_Southampton_PNA2014_OpeningHours | 1 | 08/08/14 | PDF | Community Pharmacy Opening Hours. Opening times are shown as a combination of symbol style (weekday) and colour (weekend). Note: 100 hour, non-standard and nearby pharmacies are included for information. |
| Map4_Southampton_PNA2014_Pop | 1 | 08/08/14 | PDF | Pharmacies and Population Density by Output Area. Population density per square km by Census 2011 Output Area. Population density ranges (shades of brown) are based on Southampton-wide values grouped as quintiles (divided into fifths). Data source: ONS, Census 2011. |
| Map5_Southampton_PNA2014_IMD | 1 | 08/08/14 | PDF | Pharmacies and Index of Multiple Deprivation by LSOA. Index of Multiple Deprivation 2010 by Census Lower Super Output Area. Deprivation ranges (shades of green) are based on England-wide deprivation scores grouped as quintiles. Data source: Dept. for Communities & Local Government. |
| Map6_Southampton_PNA2014_BME | 1 | 08/08/14 | PDF | Pharmacies and Black & Minority Ethnic levels (BME) by Ward. |

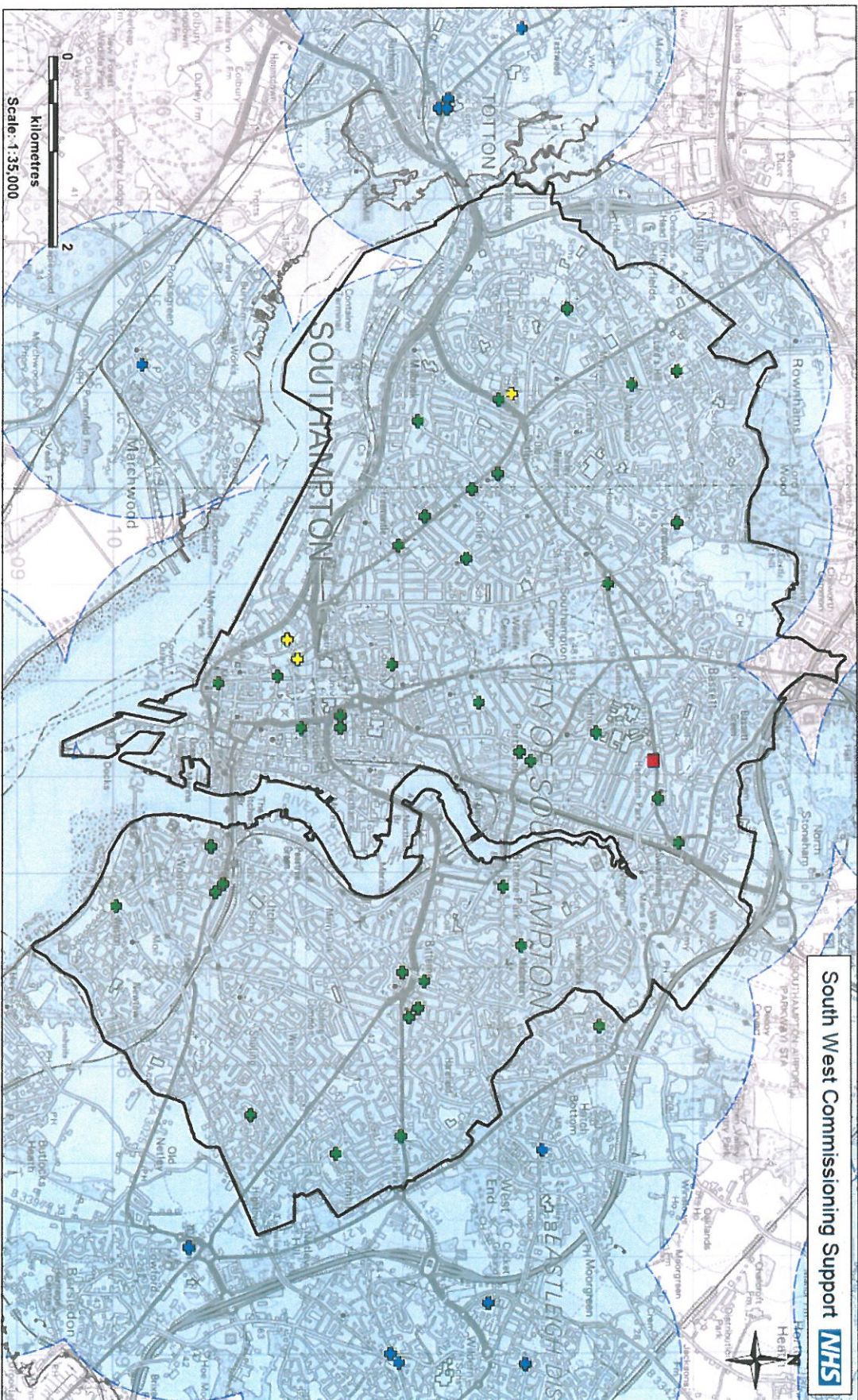
| | | | | | |
|---|---|----------|-----|--|---|
| | | | | | Black & Minority Ethnic levels by electoral ward. BME ranges (shades of turquoise) are based on Southampton-wide percentages grouped as quintiles. Data source: ONS, 2011 Census. |
| Map7_Southampton_PNA2014_Drive_Avg | 1 | 08/08/14 | PDF | | Average drive times to pharmacies. Drive times (private vehicle) are shown as 5 minute zones, up to 30 minutes. The population summary gives the number of residents within cumulative travel zones. 98.6% of Southampton residents are within 5 minutes average drive time of a pharmacy (during weekday daytime). Note that the population data is calculated using LSOA centroids and therefore is only a rough approximation. Data source: ONS, Mid Year Estimate 2012 |
| Map8_Southampton_PNA2014_Drive_Off_Peak | 1 | 08/08/14 | PDF | | Off peak drive times to pharmacies. Drive times (private vehicle) are shown as 5 minute zones, up to 30 minutes. The population summary gives the number of residents within cumulative travel zones. 100% of Southampton residents are within 5 minutes off peak drive time of a pharmacy (during weekday daytime). Note that the population data is calculated using LSOA centroids and therefore is only a rough approximation. Data source: ONS, Mid Year Estimate 2012 |
| Map9_Southampton_PNA2014_Drive_Peak | 1 | 08/08/14 | PDF | | Peak drive times to pharmacies. Drive times (private vehicle) are shown as 5 minute zones, up to 30 minutes. The population summary gives the number of residents within cumulative travel zones. 98.6% of Southampton residents are within 5 minutes peak drive time of a pharmacy, while the remaining 1.4% are with 5-10 minutes (during weekday daytime). Note that the population data is calculated using LSOA centroids and therefore is only a rough approximation. Data source: ONS, Mid Year Estimate 2012 |
| Map10_Southampton_PNA2014_PT_AM | 1 | 08/08/14 | PDF | | Public Transport times to pharmacies (Tuesday, 9am to 1pm) Times represent the best case scenario for journeys by bus and train on a Tuesday between 9am and 1pm. Travel times are shown as 5 minute zones, up to 30 minutes. The population summary gives the number of Southampton residents within cumulative travel zones. 82.4% of Southampton residents are within 10 minutes of a pharmacy. Note: Due to the frequency of services |

| | | | | |
|-----------------------------------|---|----------|-----|--|
| Map11_Southampton_PNA2014_PT_PM | 1 | 08/08/14 | PDF | remaining constant throughout the day there is very little difference between the AM and PM maps (10 and 11) Public Transport times to pharmacies (Tuesday, 1pm to 5pm) Times represent the best case scenario for journeys by bus and train on a Tuesday between 1pm and 5pm. Travel times are shown as 5 minute zones, up to 30 minutes. The population summary gives the number of Southampton residents within cumulative travel zones. 81.1% of Southampton residents are within 10 minutes of a pharmacy. Note: Due to the frequency of services remaining constant throughout the day there is very little difference between the AM and PM maps (10 and 11) |
| Map12_Southampton_PNA2014_Walking | 1 | 08/08/14 | PDF | Walking times to pharmacies. Walking times (based on 2.5mph/4kph) are shown as 5 minute zones, up to 30 minutes. The population summary gives the number of Southampton residents within cumulative travel zones. 91.1% of Southampton residents are within 20 minutes walking time of a pharmacy. |
| Map13_Southampton_PNA2014_Wards | 1 | 08/08/14 | PDF | Pharmacy locations with Southampton ward boundaries. Southampton pharmacies are labelled by index number. |

Map 1



Map 2



South West Commissioning Support **NHS**

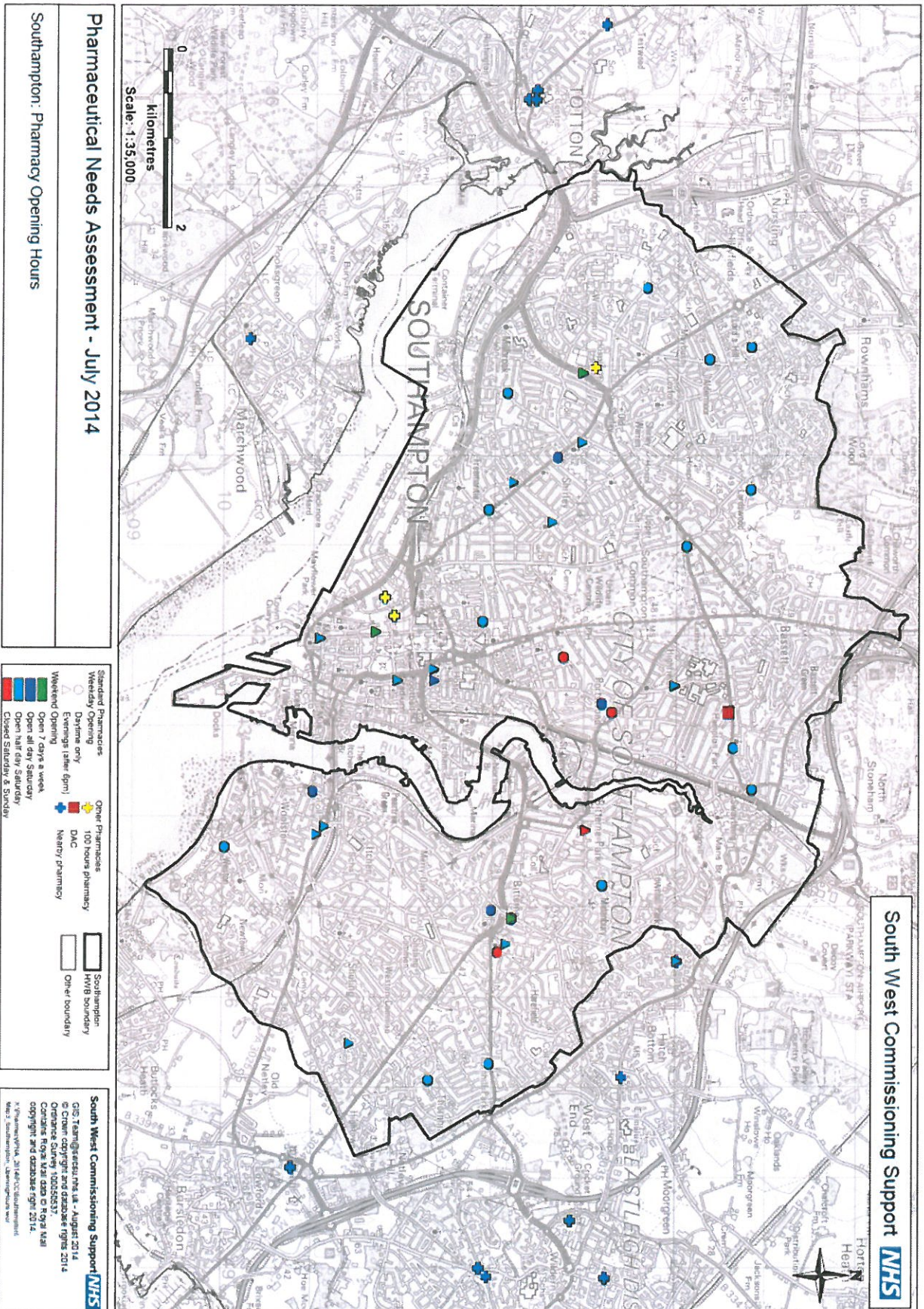
Pharmaceutical Needs Assessment - July 2014

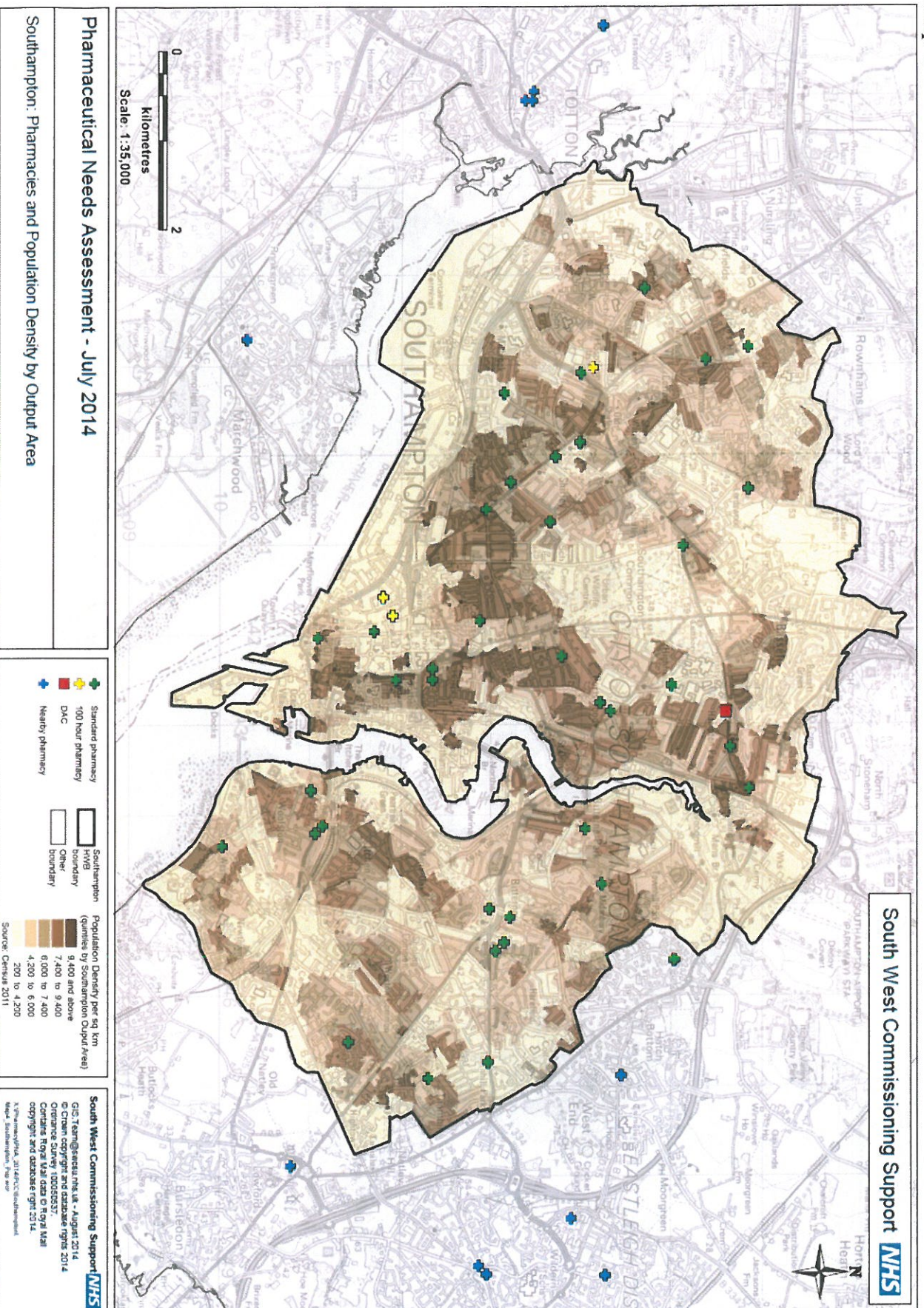
Southampton: 1.6km buffers around pharmacies

- + Standard pharmacy
- + 100 hours pharmacy
- + DAC
- + Other pharmacy
- 1.6 km buffer
- Southampton HWB boundary
- Other boundary

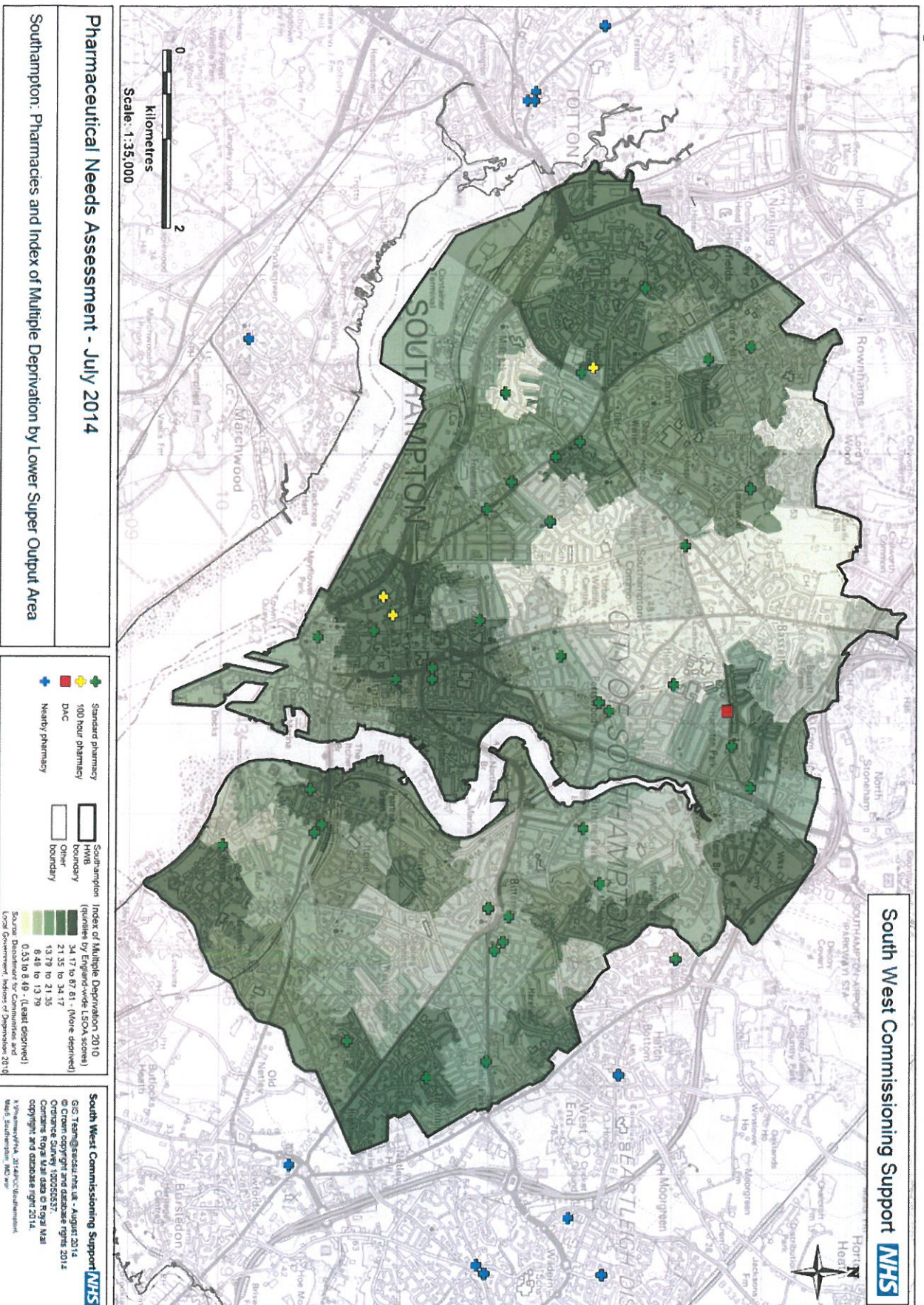
South West Commissioning Support **NHS**

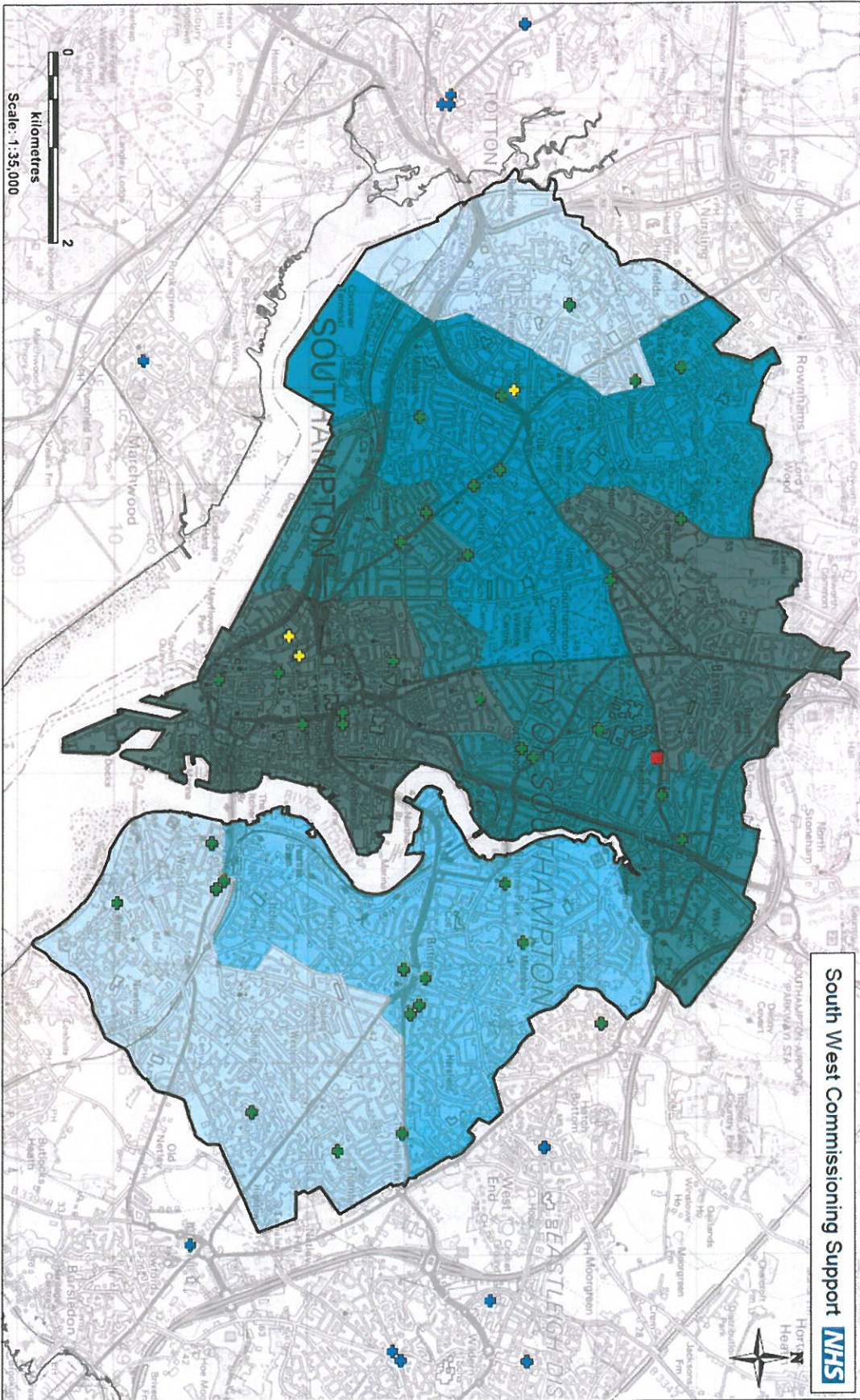
GIS Team@seasouth.nhs.uk - August 2014
 © Crown copyright and database rights 2014
 Ordnance Survey 100056337
 Contains Royal Mail data © Royal Mail
 copyright and database right 2014
 X:\Pharmacy\PNA_2014\CC\Southampton
 Map2_Southampton_1.6km_buffers_pharmacies.mxd

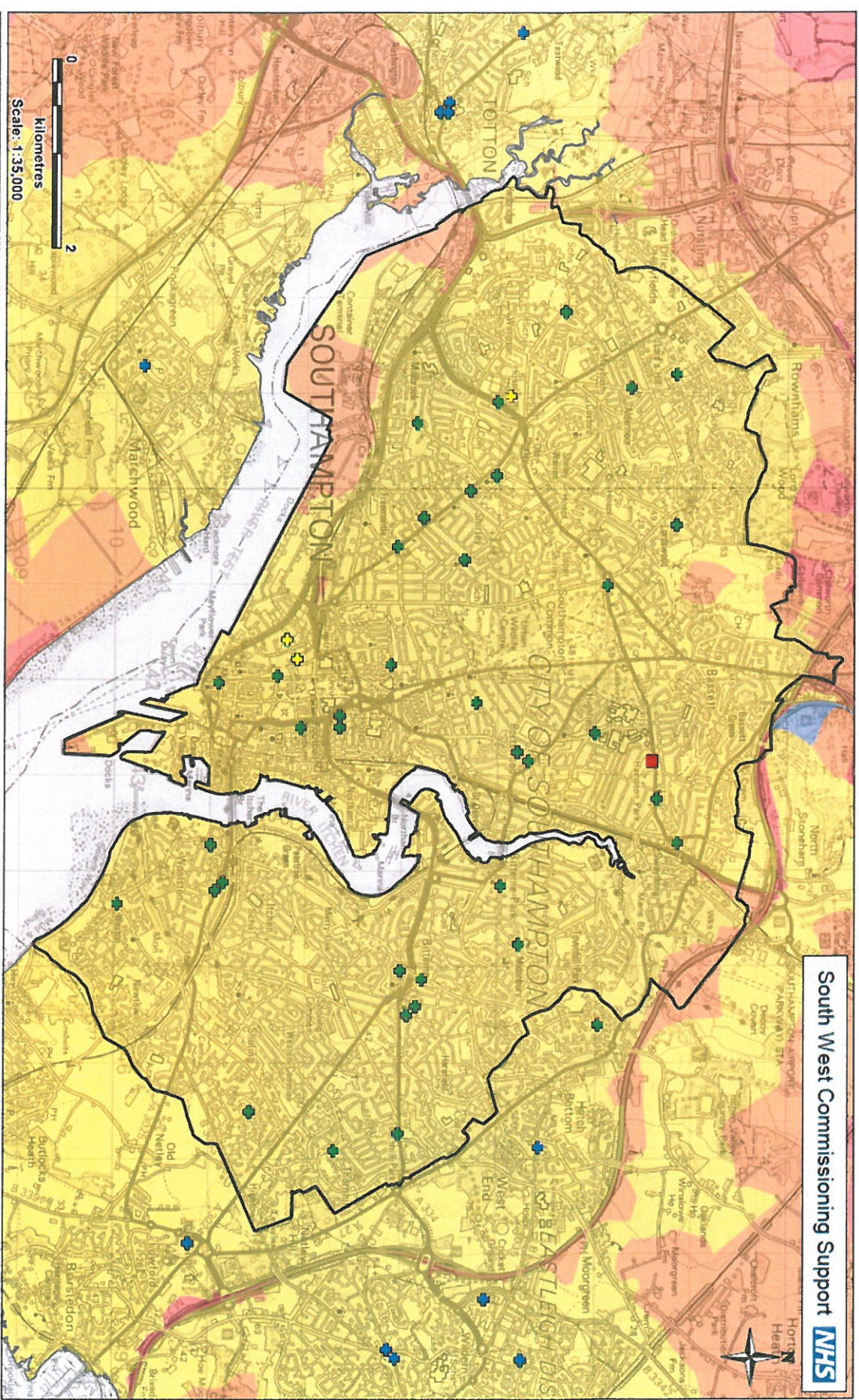




Map 5







Pharmaceutical Needs Assessment - July 2014

Southampton: Average drive times to nearest pharmacy

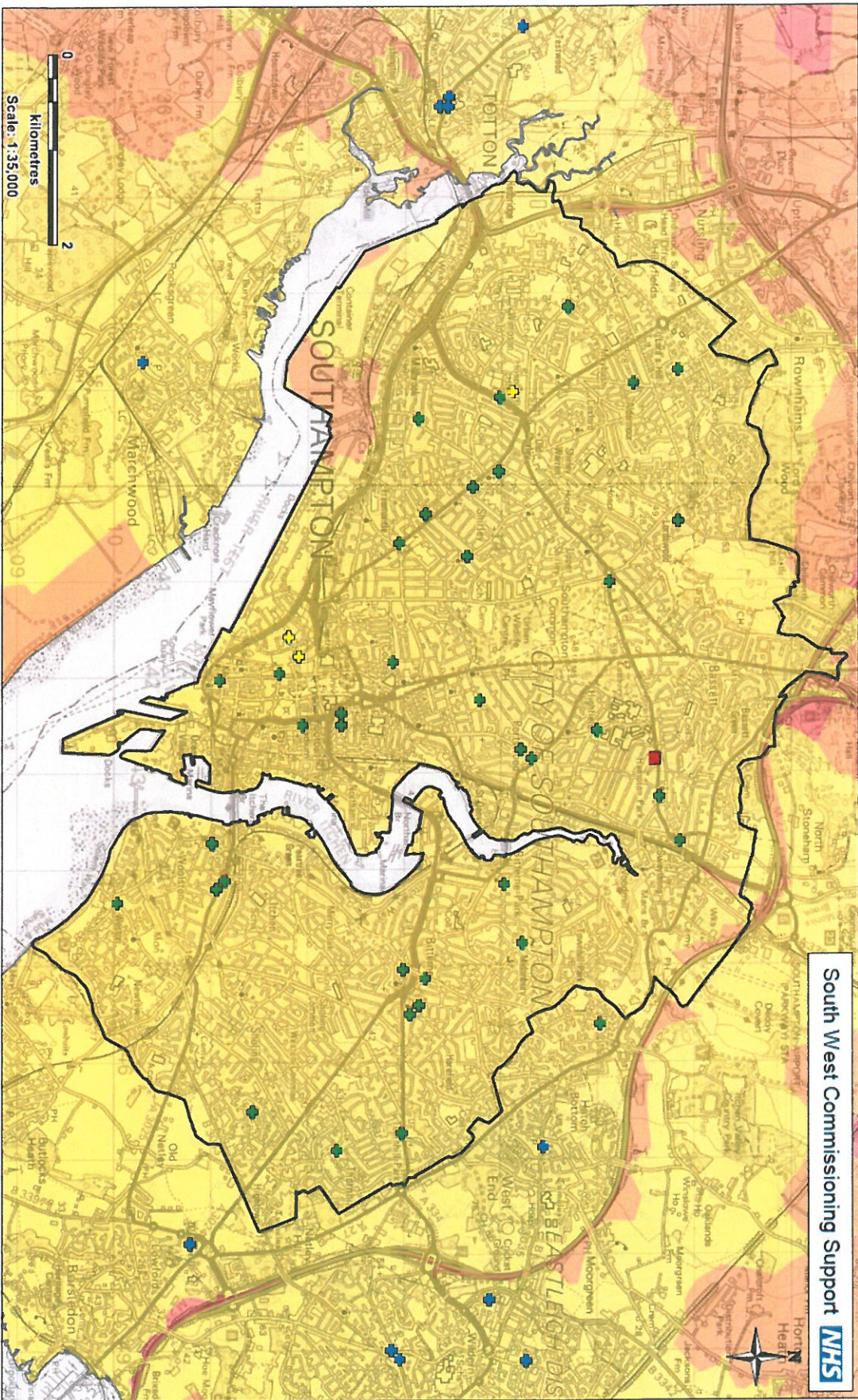
| | | | |
|--|-------------------|--|----------------|
| | Standard pharmacy | | Southampton |
| | 100 hour pharmacy | | Other boundary |
| | Nearby pharmacy | | |

| | |
|--|------------|
| | 0-5 Mins |
| | 5-10 Mins |
| | 10-15 Mins |
| | 15-20 Mins |
| | 20-25 Mins |
| | 25-30 Mins |

| | | |
|--|---------|------|
| Population within travel zones: | | |
| Mins | Number | % |
| 0-5 | 236,158 | 98.6 |
| 0-10 | 239,428 | 100 |
| Total population of Southampton = 239,428 (ONS Mid Year Estimate 2012) | | |

South West Commissioning Support NHS

GIS Team@swcs.nhs.uk - August 2014
 © Crown copyright and database rights 2014
 Ordnance Survey 100050537
 Contains Royal Mail data © Royal Mail copyright and database right 2014.
 A7 PharmacyPNA_2014\CC\Southampton
 Map7_Southampton_Drive_times.vml



South West Commissioning Support **NHS**

Pharmaceutical Needs Assessment - July 2014

Southampton: Off peak drive times to nearest pharmacy

- + Standard pharmacy
- 100 hour pharmacy
- DAC
- + Nearby pharmacy
- Southampton
- HNVB boundary
- Other boundary
- 0-5 Mins
- 5-10 Mins
- 10-15 Mins
- 15-20 Mins
- 20-25 Mins
- 25-30 Mins

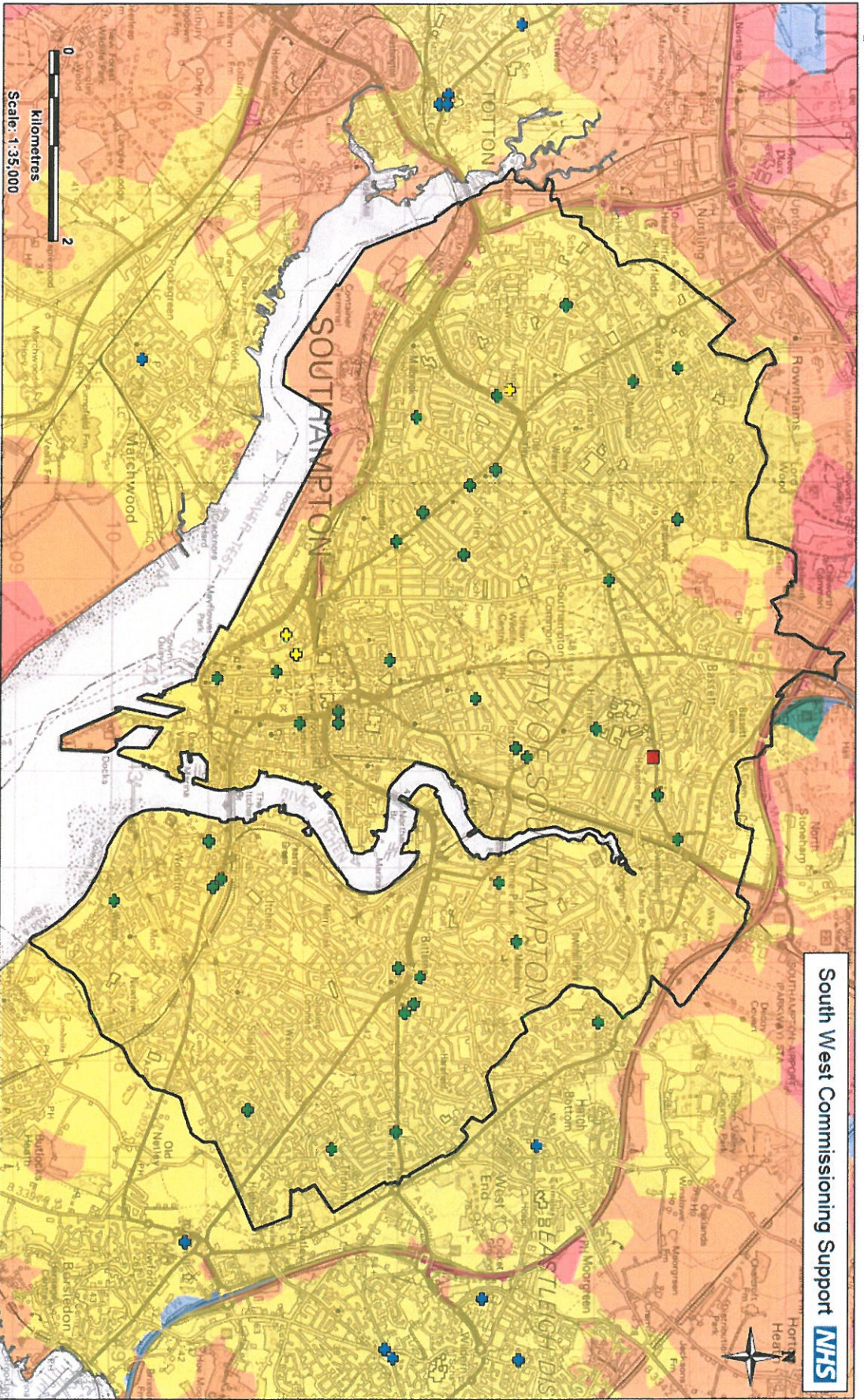
Population within travel zones:

| Mins | Number | % |
|--|---------|-----|
| 0-5 | 239,428 | 100 |
| Total population of Southampton = 239,428 (ONS Mid Year Estimate 2012) | | |

South West Commissioning Support **NHS**
 GIS Team@scs.nhs.uk - August 2014
 © Crown copyright and database rights 2014
 Ordnance Survey 100055537
 Contains Royal Mail data © Royal Mail
 copyright and database right 2014
 A pharmaceutical, 2014/08/14/07/08/14
 Health Southampton, Date of issue: 07/08/14

Map 9

South West Commissioning Support **NHS**



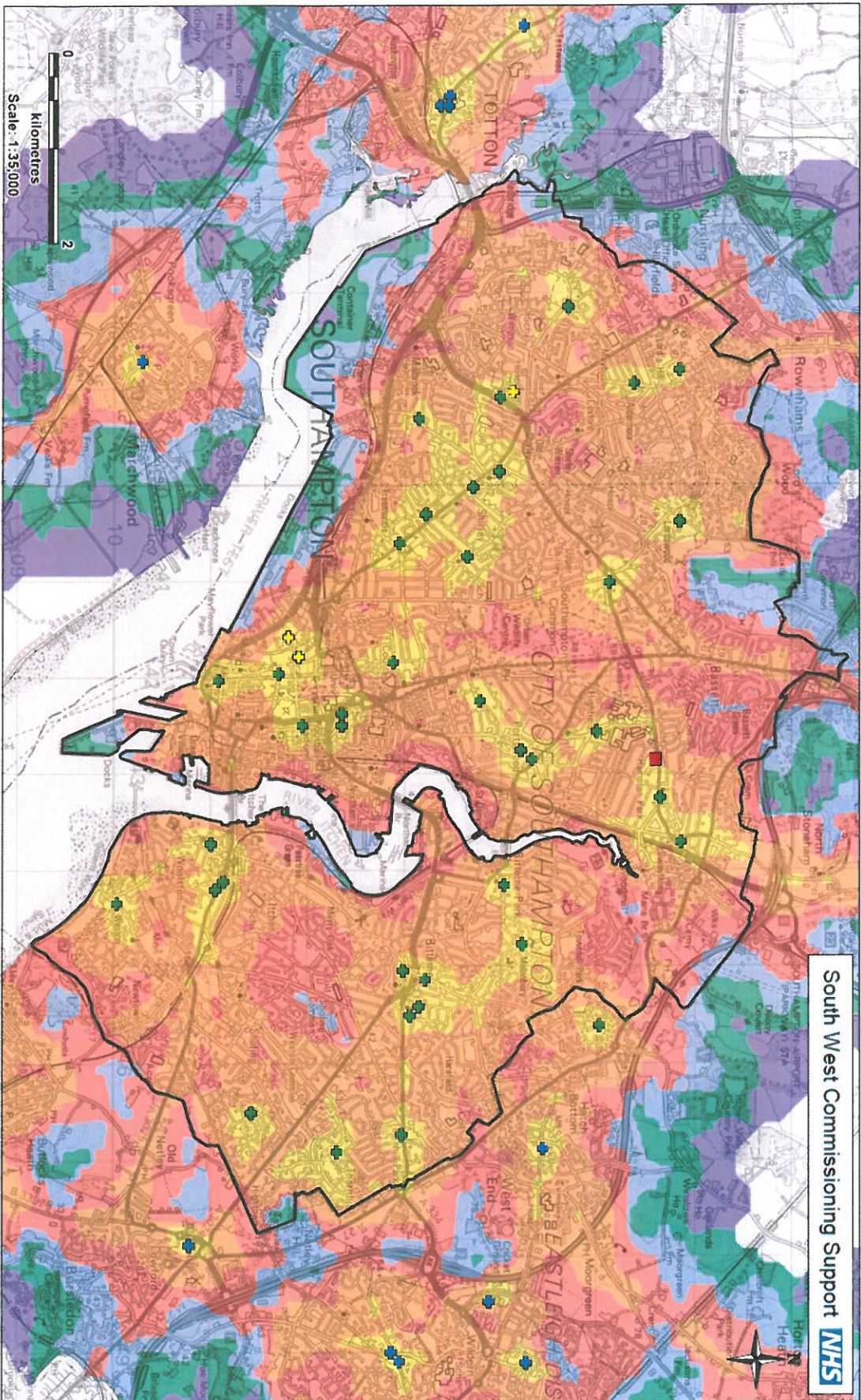
Pharmaceutical Needs Assessment - July 2014

Southernpton: Peak drive times to nearest pharmacy

- + Standard pharmacy
- + 100 hour pharmacy
- + Needy pharmacy
- Southampton
- Other boundary
- 0-5 Mins
- 5-10 Mins
- 10-15 Mins
- 15-20 Mins
- 20-25 Mins
- 25-30 Mins

| Population within travel zones: | | |
|--|---------|------|
| Mins | Number | % |
| 0-5 | 236,156 | 98.6 |
| 0-10 | 238,428 | 100 |
| Total population of Southampton = 238,428 (ONS Mid Year Estimate 2012) | | |

South West Commissioning Support **NHS**
 GIS Team@scsw.nhs.uk - August 2014
 Ordnance Survey map data © Crown Copyright and database right 2014
 Contains Royal Mail data © Royal Mail copyright and database right 2014
 NHS, Southampton, City of Southampton
 Map 9: Southampton - Drive Times



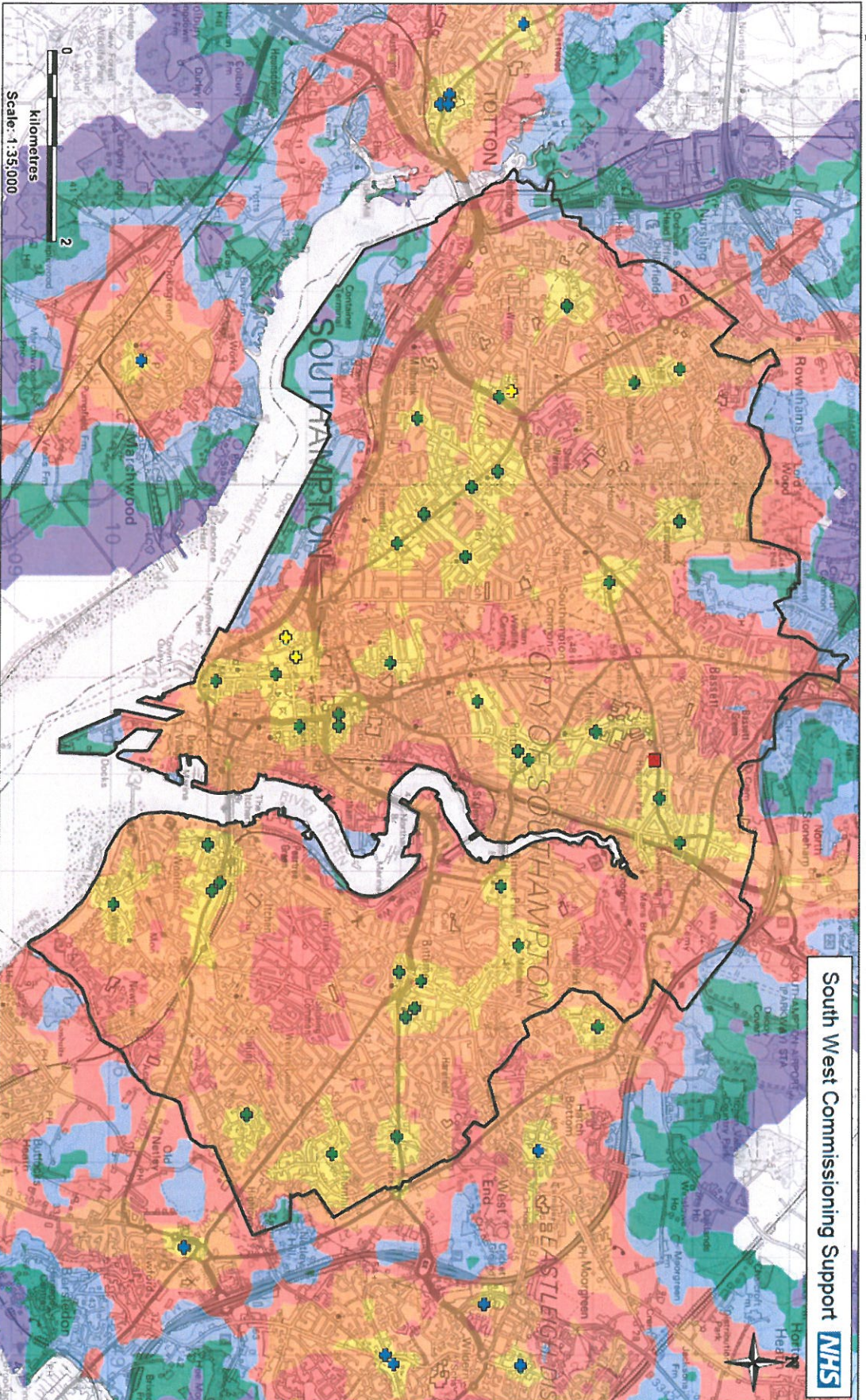
Pharmaceutical Needs Assessment - July 2014

Southampton: Public Transport times to nearest pharmacy
Tuesday, 9am to 1pm

- + Standard pharmacy
 - + 100 hour pharmacy
 - + Nearby pharmacy
 - Southampton HVRB boundary
 - Other boundary
- | Public Transport Times | Population within travel zones: |
|------------------------|---------------------------------|
| 0-5 Mins | Number: 36,436 |
| 5-10 Mins | %: 16.1 |
| 10-15 Mins | Number: 191,231 |
| 15-20 Mins | %: 82.4 |
| 20-25 Mins | Number: 224,578 |
| | %: 96.2 |
| | Number: 237,619 |
| | %: 99.2 |
| | Number: 239,428 |
| | %: 100 |
| | Number: 239,428 |
| | %: 100 |
- Total population of Southampton = 239,428
(ONS Mid Year Estimate, 2012)

South West Commissioning Support **NHS**

GIS Team@swcs.nhs.uk - August 2014
© Crown copyright and database rights 2014
Ordnance Survey 100050537
Contains Royal War data © Royal War
copyright and database right 2014
K PharmacyData_2014.mxd
Map 10: Southampton - July 2014



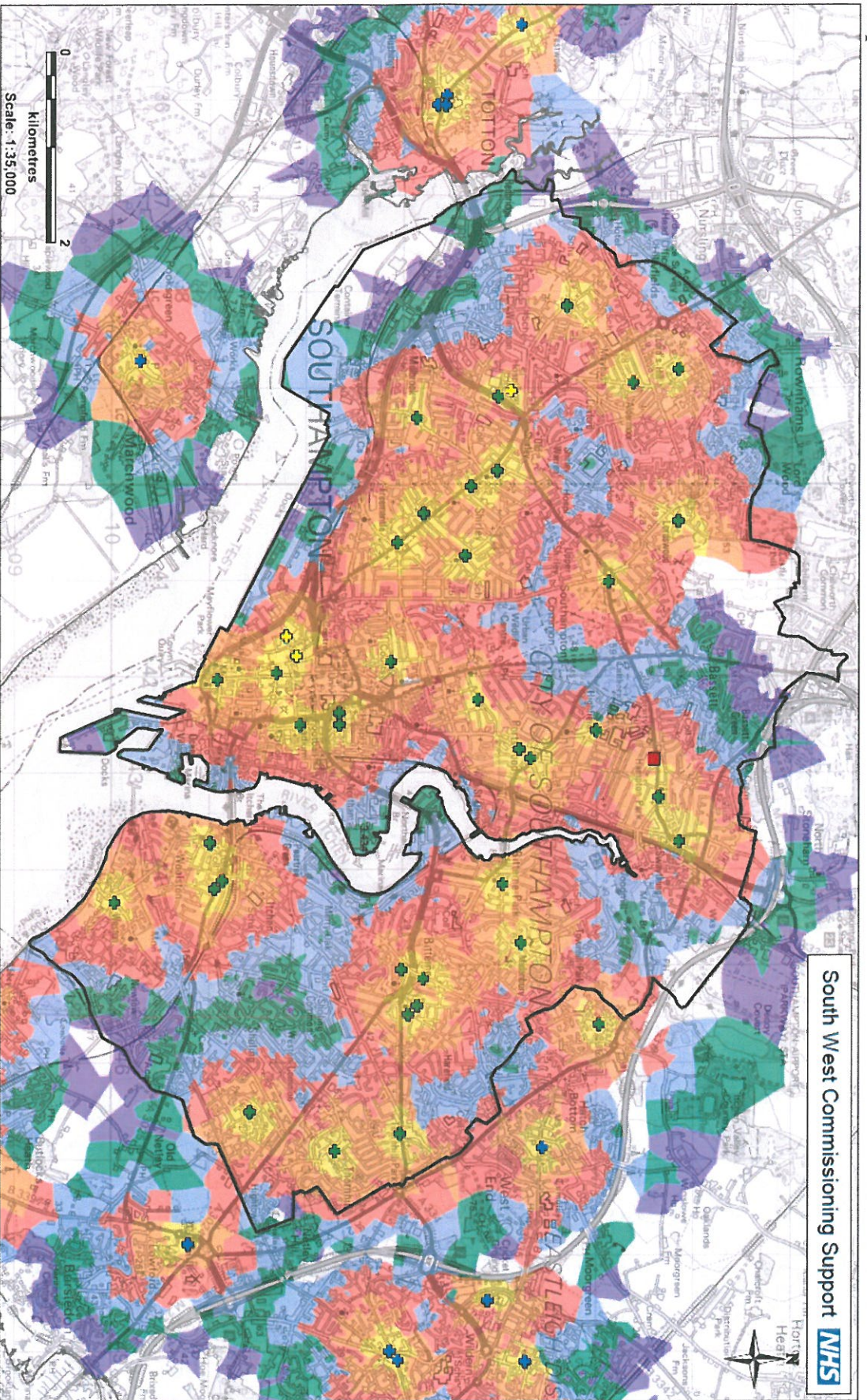
Pharmaceutical Needs Assessment - July 2014

Southampton: Public Transport times to nearest pharmacy
Tuesday, 1pm to 5pm

- Standard pharmacy
- 100 hour pharmacy
- DAC
- Nearby pharmacy
- Southampton
- HMW boundary
- Other boundary

| Public Transport Times | Population within travel zones: |
|------------------------|--|
| 0-5 Mins | Mins |
| 5-10 Mins | Number |
| 10-15 | % |
| 15-20 | 0-5 |
| 20-25 | 0-10 |
| | 0-15 |
| | 0-20 |
| | 0-25 |
| | 0-30 |
| | Total population |
| | Total population Southampton = 239,428 |
| | (ONS Mid Year Estimate 2012) |

South West Commissioning Support NHS
 GIS Team@swcp.nhs.uk - August 2014
 © Crown copyright and database right 2014
 Ordnance Survey 100056537
 Contains Royal Mail data © Royal Mail
 copyright and database right 2014
 Map 11 Southampton - July 2014



South West Commissioning Support **NHS**

Pharmaceutical Needs Assessment - July 2014

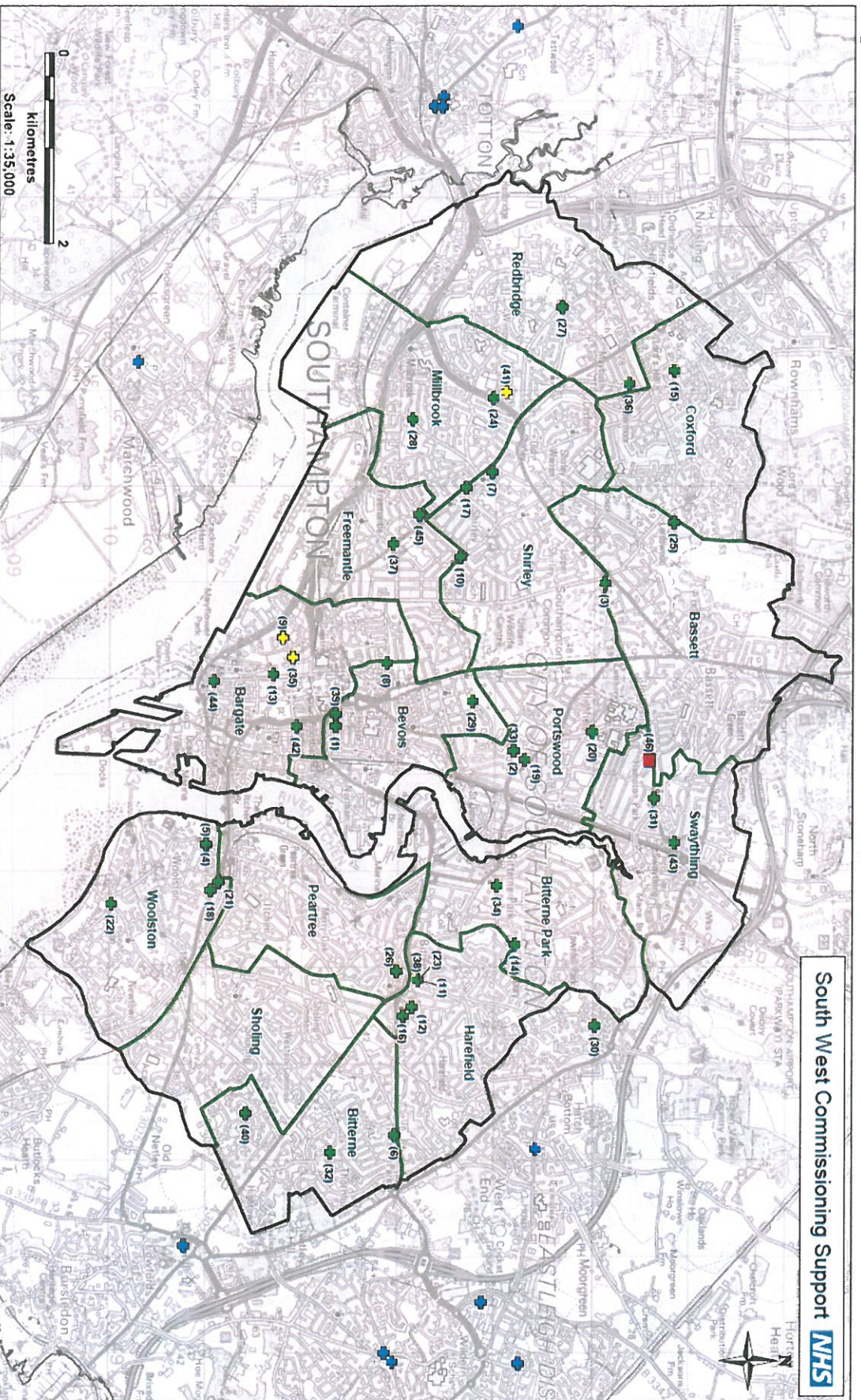
Southampton: Walking times to nearest pharmacy

- + Standard pharmacy
 - 100 hour pharmacy
 - DAC
 - + Nearest pharmacy
 - Southampton HMB boundary
 - Other boundary
- | Walking times |
|---------------|
| 0-5 Mins |
| 5-10 Mins |
| 10-15 Mins |
| 15-20 Mins |
| 20-25 Mins |
| 25-30 Mins |

| Miles | Number | % |
|---|---------|------|
| 0-5 | 28,601 | 12.4 |
| 0-10 | 117,171 | 48.9 |
| 0-15 | 180,696 | 73.5 |
| 0-20 | 218,278 | 89.1 |
| 0-25 | 237,619 | 95.2 |
| 0-30 | 237,619 | 95.2 |
| Total population of Southampton = 239,428 | | |
| ONS Mid Year Estimate 2012 | | |

South West Commissioning Support **NHS**

GIS Team@swcsu.nhs.uk - August 2014
 © Crown copyright and database rights 2014
 Ordnance Survey 100050537
 Contains Royal Air Force © Royal Air Force copyright and database right 2014
 X:\Pharmacy\PNA_2014\PC\Southampton\Output\Map12_Southampton_walk.wm



South West Commissioning Support **NHS**

Pharmaceutical Needs Assessment - July 2014
 Southampton: Pharmacy locations and Electoral Wards

- + Standard pharmacy
- + 100 hours pharmacy
- + DAC
- + Nearby pharmacy
- Southampton HWB boundary
- Ward boundary
- Other boundary

South West Commissioning Support NHS
 GIS Team@pscc.nhs.uk - August 2014
 © Crown copyright and database right 2014
 Ordnance Survey 100056537
 Contains Royal Mail data © Royal Mail copyright and database right 2014
 1. Pharm@place, 31/4/2014
 Map 13 Southampton, Version 001